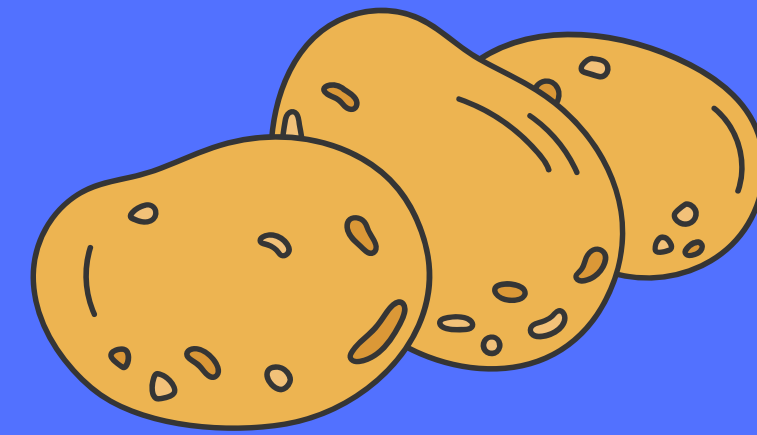
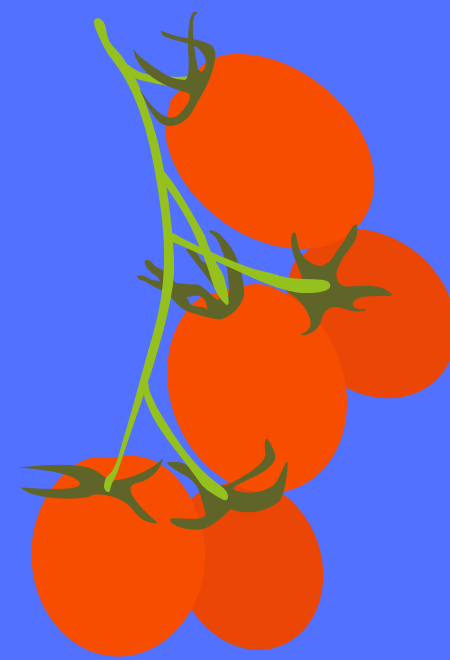
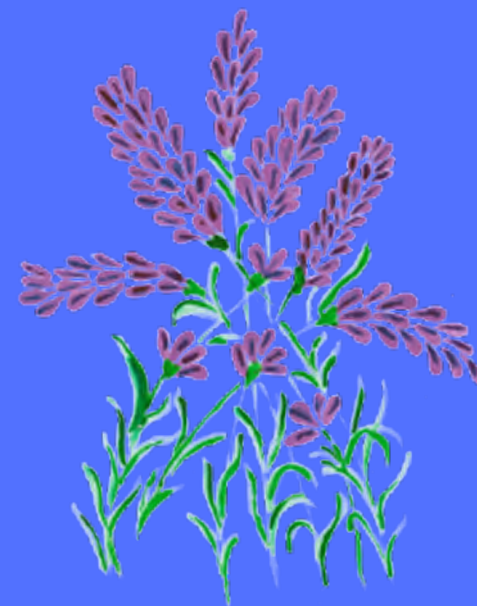
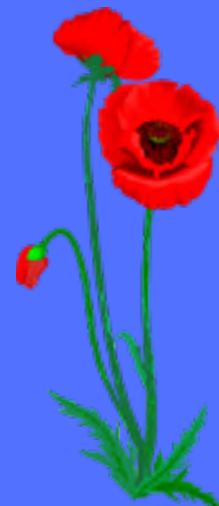


Progetto orti

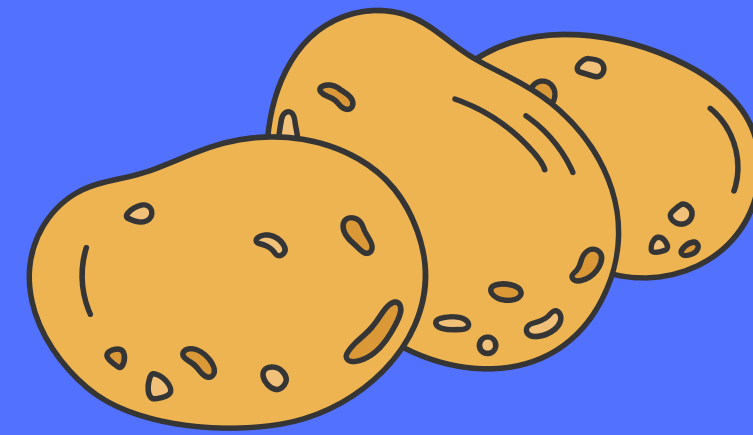


Il progetto nasce in collaborazione con la cooperativa sociale Hortus e gli enti locali

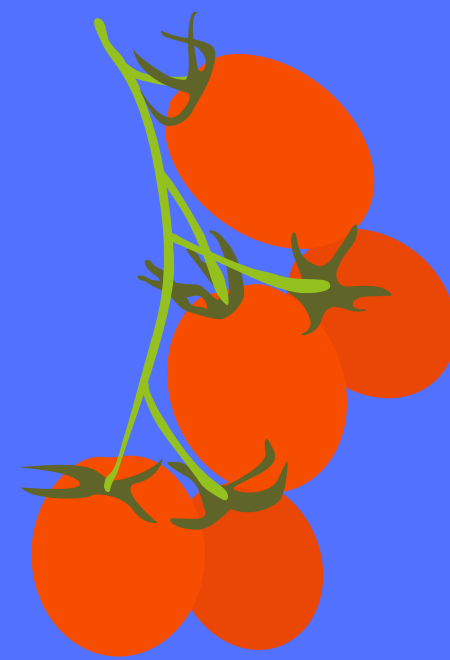




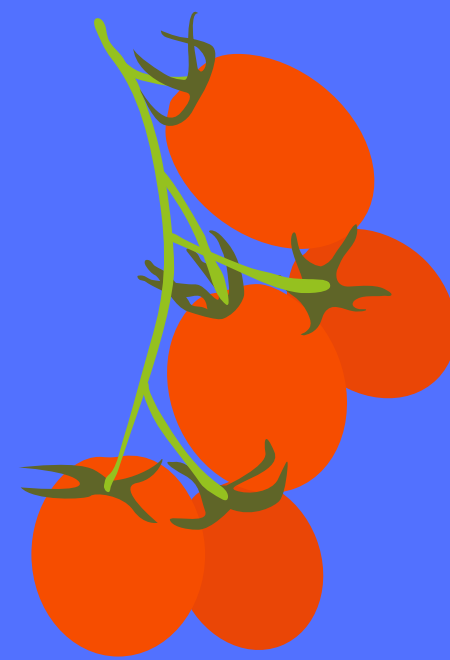
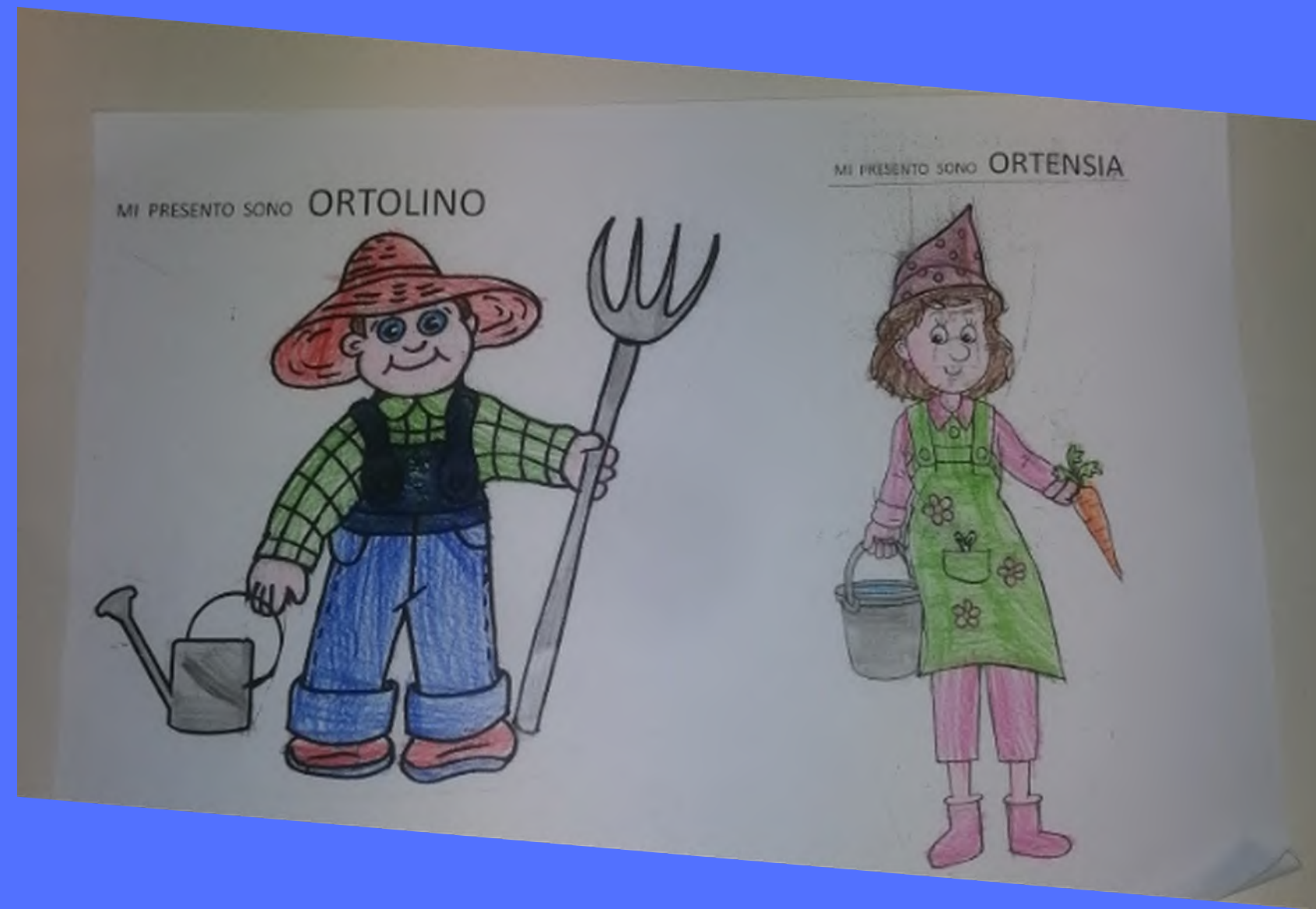
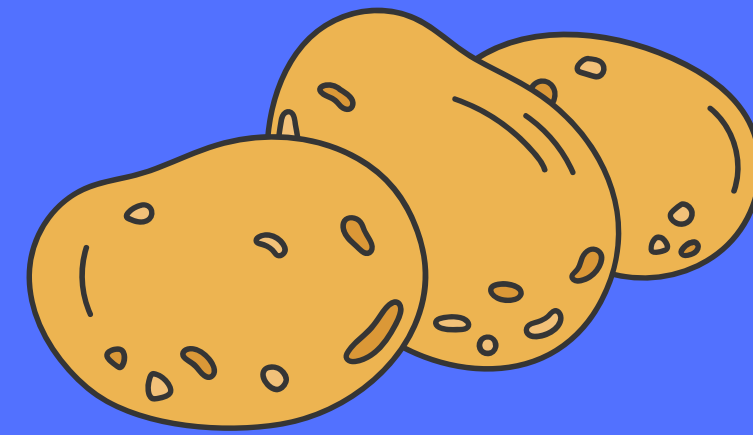
I nostri esperti presentano i due personaggi Ortolino e Ortensia, con loro siamo pronti a scoprire le meraviglie dell'orto.



ORTOLINO E ORTENSIA



La nostra rielaborazione dei personaggi.



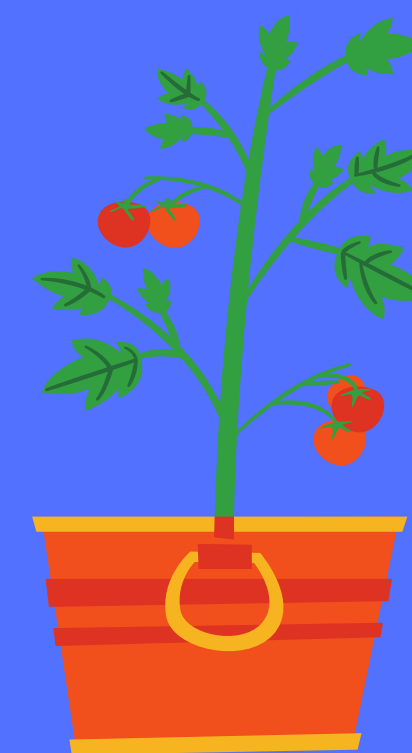


Conosciamovari semi e creiamo una "culla" per porre i semidi fave





*Per la pianta è necessaria
una terra fine e nutriente*





*Con amore, cura e
pazienza, sono spuntate le
nostre piantine*

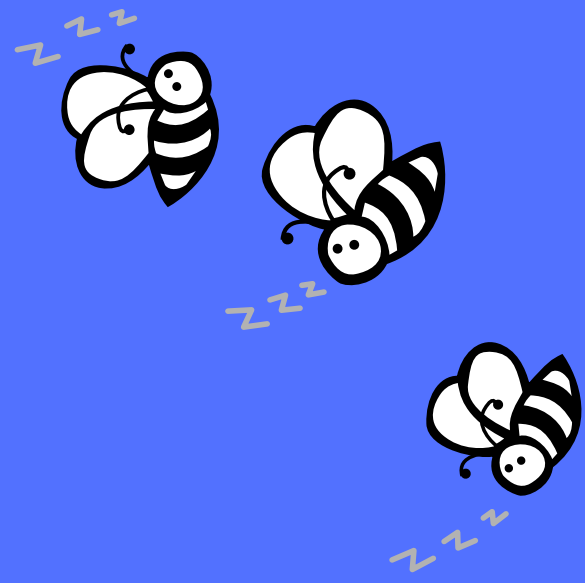




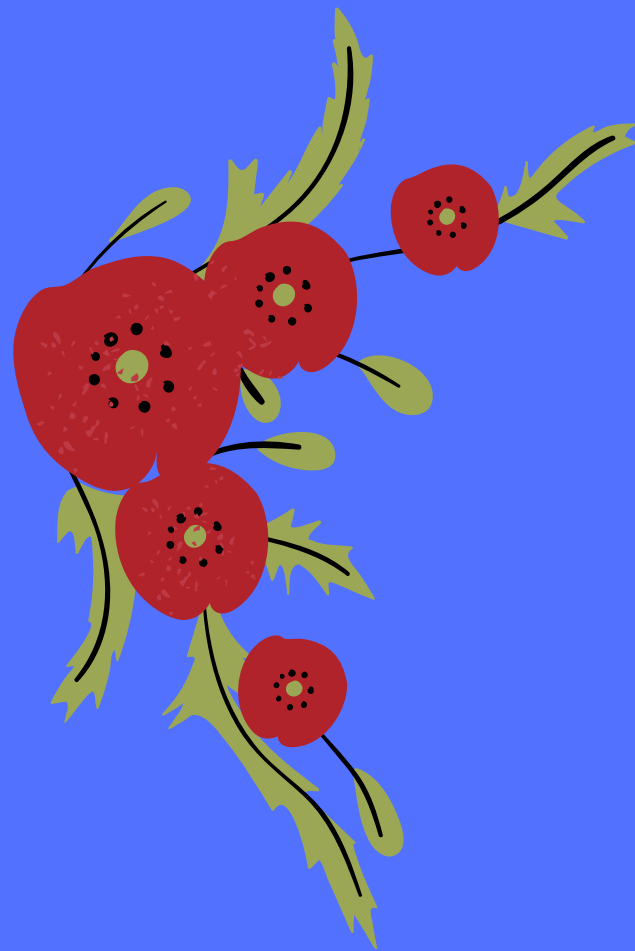
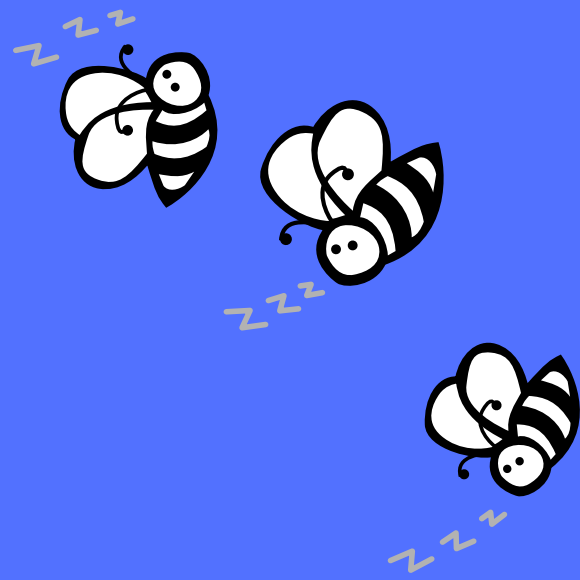
Andiamo a piantare le nostre fave nel vicino orto sociale

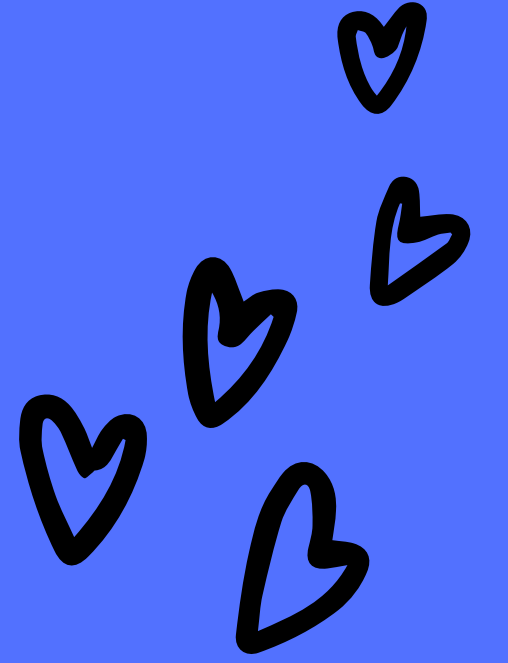


Conosciamogli animali amici dell'orto



*Realizziamo..
gli spaventapasseri*





Giorno 26 maggio alla presenza del vicesindaco la cooperativa Hortus conclude la prima parte del percorso con una festa alla presenza dei genitori

